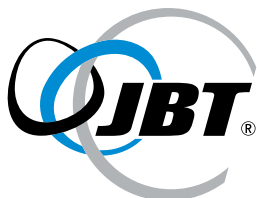


Signature Gate Series

ENGLISH



Versatility, Reliability.



STRONGER TOGETHER

TIPPER TIE™

Signature Gate Series



Product Advantage

Tipper Tie's stainless steel Signature Gate Series clippers provide one step closing and clipping of bags and casings for a variety of food products, including meats, cheeses and poultry products.

These gate actuated clippers accommodate a wide range of products, from small poultry packaging to fibrous, collagen, plastic and bulky animal casings. A strong and secure closure is applied with a single, smooth motion by the operator.

Whether vertically or horizontally mounted, the Signature Gate Actuated line performs the following:

- Gathers and shapes (voids) the neck of the bag
- Applies a secure seal
- Trims excess bag tail from the product (excludes no-knife models)

A variety of standard features add value including an air filter regulator for less maintenance, and spooled clips to minimize reloads.

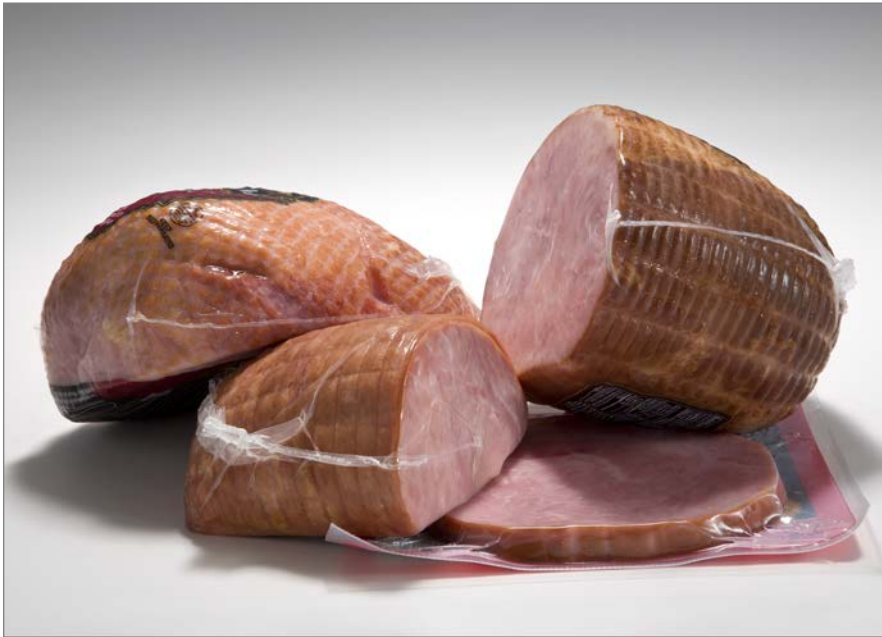
For a simple, cost-efficient solution for your clipping operation, look to the Signature Gate Series.

Applications

- Casing, bags and netting
- Sausage, meat and poultry products
- Live fish
- Liquids, soups
- Bulky products including whole turkeys and other meats
- Fibrous, collagen or plastic casing

Technology

- Stainless steel /non-corrosive materials construction
- Designed to meet AMI standards
- Air driven
- Precise control over clip closure pressure
- Minimal machine maintenance
- Variety of clip sizes available
- Vertical and horizontal models available
- Adapts easily to existing production lines



Both the 100 and 400 Series clippers use a power-driven cut-off knife for smooth bag tail trimming (knife models only) and an adjustable crimp control that allows the operator to tighten or loosen the clip.

They are designed to provide one-step closing of medium-sized bags for a variety of food products, such as beef, poultry, cheeses, or a wide assortment of non-food products.

100 Series

Models SC187L and SC187LNK are vertical mount, pneumatic clippers. SC187LNK is a no-knife model. Models SF187L and SF187LNK are horizontally mounted. Model SF187LNK is a no-knife model. 100 Series clippers can be stick or spooled clip configuration. Each model uses 100 series clips.

400 Series

The 400 Series are designed to operate with stick clips. An optional kit is available for most models to convert the stick clip assembly to a spooled clip.

Model SC487 is a vertical-mount, pneumatically-operated clipper. Left and right handed models are available. SC487LNK is a left handed model that offers a no-knife option.

Model SF487L is a horizontal clipper. Model SF487LNK is a left handed model that offers a no-knife option.

Premium Quality Clips

High-quality clips are essential to a successful clip closure. TIPPER TIE clips are manufactured from a special aluminum alloy and are held to exacting specifications that exceed those from the general wire industry. The dimensions of all TIPPER TIE clips are kept within very tight tolerances, ensuring a perfect closure every time. Furthermore, clip leg ends are radiused and lubricated to ensure that both clip legs form simultaneously and uniformly as the clip gathers the packaging materials. The result is a clip that closes smoothly and securely every time.



Technical Data

Model Selector

	Gate	Cross over	Gate left vertical	Gate right vertical	Gate left horizontal	No knife	Pneumatic knife	Stick	Spool	Weight	FRL (Filter Lubricator)	Machine Name
100 series	✓	✓	✓		✓	✓	✓	✓	✓	✓	✓	SC187L, SC187LNK, SF187L, SF187LNK,
400 series	✓	✓	✓	✓	✓	✓	✓			✓	✓	SF487L, SF487LNK, SC487L, SC487R, SC487LNK, SPR463L

Specifications: 100 Series

SC187L/LNK

7.9 Liters per cycle at 5,5 Bar
 80-90 PSI (5,5-6,2 Bar)
 100-Series Stick Clips
 28" H (711 mm)
 7" W (178 mm)
 11.5" L (292 mm)
 Machine weight: 55 Pounds (24,9 Kg)
 Shipping weight: 75 Pounds (34,0 Kg)

SF187L/LNK

7.9 Liters per cycle at 5,5 Bar
 80-90 PSI (5,5-6,2 Bar)
 100-Series Stick Clips
 25.5" H (648 mm)
 16" W (406 mm)
 24" L (610 mm)
 Machine weight: 40 Pounds (18,2 Kg)
 Shipping weight: 50 Pounds (22,7 Kg)

Specifications: 400 Series

SC487L/R LNK/RNK

7.9 Liters per cycle at 5,5 Bar
 80-90 PSI (5,5-6,2 Bar)
 400G-Series Stick Clips
 28" H (711 mm)
 7" W (178 mm)
 11.5" L (292 mm)
 Machine weight: 52 Pounds (23,6 Kg)
 Shipping weight: 64 Pounds (29,0 Kg)

SF487L/LNK

7.9 Liters per cycle at 5,5 Bar
 80-90 PSI (5,5-6,2 Bar)
 400G-Series Stick Clips (Optional Spool Assembly)
 25.5" H (648 mm)
 16" W (406 mm)
 24" L (610 mm)
 Machine weight: 40 Pounds (18,2 Kg)
 Machine weight: 50 Pounds (22,7 Kg)

TIPPER TIE, Inc.
 2000 Lufkin Road
 Apex, NC 27539 USA
 Tel. +1 919 362 8811
 Fax +1 919 362 4839
 infoUS@tippertie.com

TIPPER TIE TECHNOPACK GmbH
 Wilhelm-Bergner-Strasse 9a
 21509 Glinde/Germany
 Tel. +49 40 72 77 04 0
 Fax +49 40 72 77 04 100
 infoDE@tippertie.com

