

Flexibility, Cost Savings.



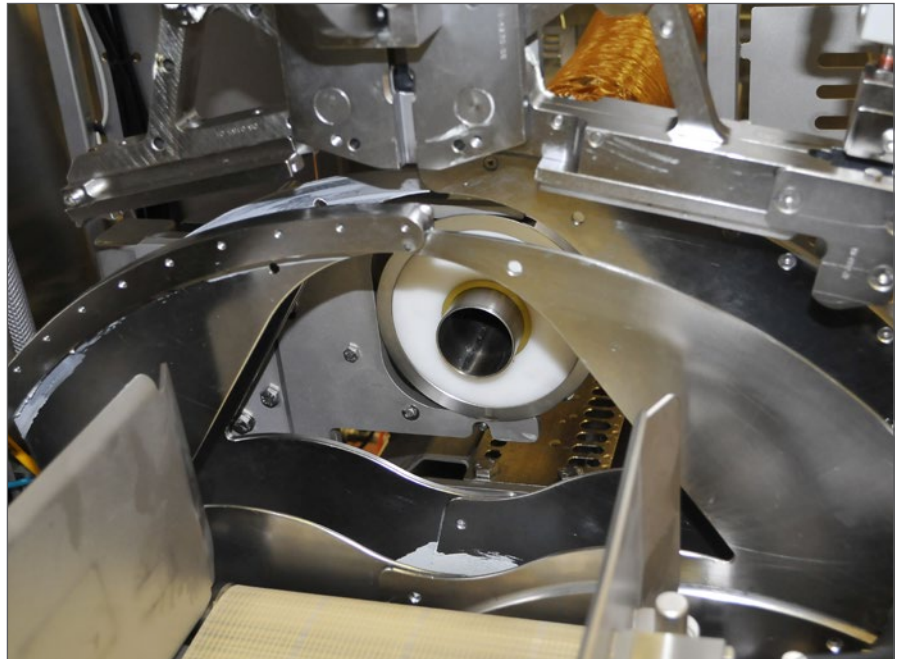
STRONGER TOGETHER

TIPPER TIE™

High Speed Automated Double Clippers

The All Around Performer

The RS family of automated double clippers is the result of TIPPER TIE's continued focus on customer value. A top performer in meat and poultry packaging, the RS product line is designed for fast, efficient production of any products within the sizer range. All known casings and netting are accommodated, as well as every pumping system on the market. Other challenging applications such as dairy products and commercial explosives are well served by the RS family. Consistently high performance has led to many satisfied customers around the world.



All RS models include a high strength, durable voider system.

Technical Highlights

The high-strength, durable voider system is the heart of the RS machine, easily handling products of all densities. Especially with solid products such as whole muscle ham, the RS family is superior in the industry. Products from 50 to 280mm in diameter are accommodated. High speeds up to 50 cycles start-stop operation, combined with a reliable clip closing system, creates an unmatched advantage in productivity. Further production processes can build on the outstanding properties of the ZR400 clip series.

Intuitive controls allow fast setup time before every production run. The RS product line features heavy duty stainless steel construction for easy wash downs.

A cushion system allows for smooth closure of sensitive casings.

Precise stuffing to a repeatable length is achieved with the RS's portion length stop. This results

in increased slicing yield and less rework when multiple logs are sliced simultaneously.

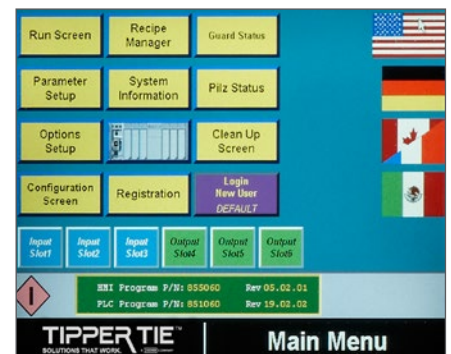
Controls

All RS machines feature intuitive controls for maximum ease of use. A touch screen interface, supported by a sophisticated color guiding system, allows for easy programming and operation. An unlimited number of recipes can be stored for quick product changeovers on RS models equipped with Allen-Bradley controls.

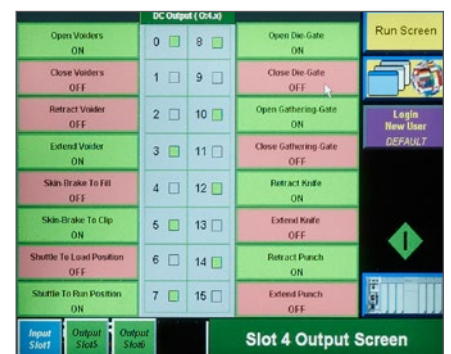
The RS diagnostic system allows a check of every work step when needed. Clear screen messages provide essential communication with the operator.

Options

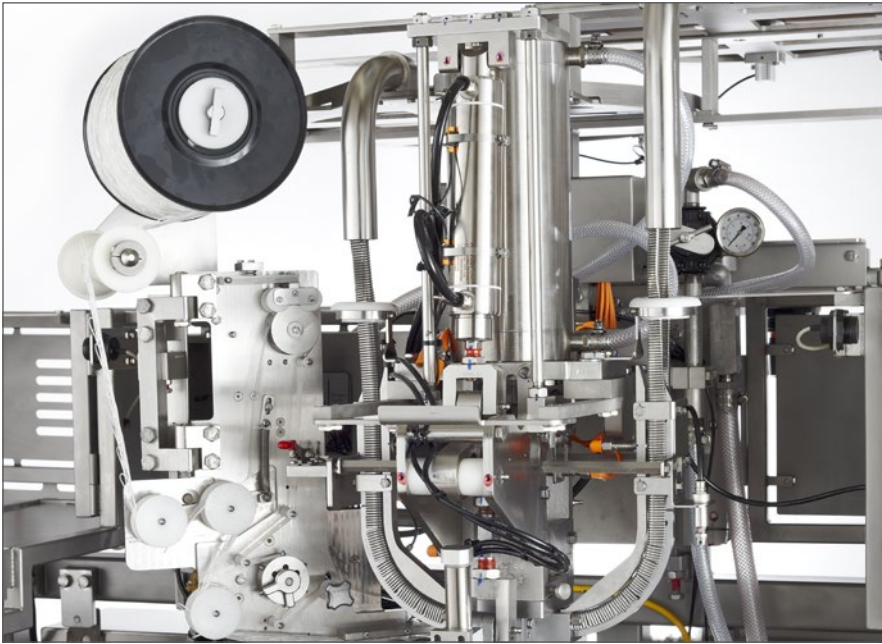
Many processes require hanging of the product. For these applications, the RS family is available with a looper that is fed during the clipping process. The system



Touch screen controls are easy to understand and operate.



Diagnostic tool for easy service.



TIPPER TIE machines feature all stainless steel parts for maximum food sanitation. The optional looper is easy to set up.

is designed for the heaviest product weights. Designed to fit existing production flows, the looper is placed on the left side (second tie) of the machine.

Mirror image machines allow a single operator to run multiple machines for considerable labor savings.

RS4204CM (Collagen Module). Some producers would like their product to have a unique or hand-crafted appearance. This can be accomplished with an attractive pattern on the product's surface. For this application, TIPPER TIE offers the RS4204CM. This configuration automatically applies collagen film and elastic netting to pumpable pork and poultry products.

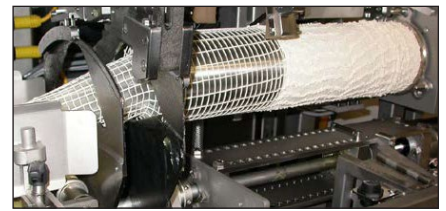
Slack Fill System. Another processing option is unique shapes such as a D-shape or square product. This can be achieved with the RS family's standard Slack Fill System. Tight, air-free products are

possible with the RS's optional vacuum system.

Many horn sizes are available to accommodate each customer's unique requirements, up to a diameter of 100 mm (4").

The Total Package

TIPPER TIE provides the complete system for clip packaging: machines, clips, loops and labels. Combined with worldwide support and service, customers profit from many hours of safe, uninterrupted production.



Collagen module.



Casing changes are fast and easy thanks to an accessible design. Step one: open.



Step two: load new casing.



Step three: ready to work.

Technical Data

Standard Features	RS4204	RS4204CM ¹ (Collagen Module)	RS4204XL (Extra Large)
Speed (cycles/min, Start/Stop mode)	50	50	30
Diameter casing minimum (mm) ²	50	50	50
Diameter casing maximum (mm) ²	220	220	280
Horn diameter maximum	100 mm (4")	100 mm (4")	100 mm (4")
Slack Fill ³	✓	✓	✓
Portion length stop (trip paddle)	✓	✓	✓
Available Options			
Allen-Bradley Controls	✓	✓	✓
Mitsubishi Controls	✓	--	--
Looper (second tie)	✓	✓	✓
Heat Seal Module (HS) ¹	✓	--	--
Vacuum	✓	✓	✓
Mirrored/Right Handing (Left standard)	✓	✓	--

- 1) CM not available with heat seal (HS) module.
- 2) Depending on casing material.
- 3) Approximately 400 mm total spreading = slack and standard spreading.

Specifications	RS2404 & RS4204CM	RS2404XL
Width:	3410 mm (134")	3410 mm (134")
Depth:	1120 mm (44")	1180 mm (44")
Height:	1880 - 2130 mm (74 - 84")	2030 - 2290 mm (80 - 90")
Supply voltage:	115 VAC or 230 VAC 50/60 Hz	208/240 VAC single phase
Fuse protection:	15A	15A
Protection class:	IP65	IP65
Air consumption:	1 standard cubic foot (25 liter) per cycle	1 standard cubic foot (25 liter) per cycle
Compressed air:	6 - 7 bar (87 - 101 psi)	6 - 7 bar (87 - 101 psi)
Caliber range:	50 - 220 mm (2 - 9")	50 - 280 mm (2 - 11")
Speed:	up to 50 portions/minute	up to 30 portions/minute
Clip type:	ZR400 series reel clips	ZR400 series reel clips
Total spreading:	381 mm (15")	381 mm (15")
Noise level: ¹	88 LpA [dB(A)]	88 LpA [dB(A)]
Weight:	1134 kg (2500 lbs)	1224 kg (2700 lbs)

- 1) According to EN ISO 11204.