



**STRONGER
TOGETHER**

**PRIME
EQUIPMENT GROUP**
Simple Solutions for Poultry Processing

CHICKEN WING SEGMENTOR

MODELS: CWS-1, CWS-1-RB



CWS-1 Fixed-blade



CWS-1-RB Rotary Blade

The CWS-1 and CWS-1-RB offer a safe and flexible wing-cutting solution, capable of producing 2-piece or 3-piece wings and designed for either cone line breast debone lines or off-line wing separation systems. The CWS-1 uses a fixed blade to wedge/push the bone apart at the joint. The CWS-1-RB uses a rotary saw blade for a cut that replicates the look of a hand-cut wing. Both machines improve worker safety and save labor.

IMPROVES WORKER SAFETY BY
AUTOMATING HAND-SAW CUTS
PRODUCES CONSISTENT
A-GRADE WING CUTS
TWO OPTIONS ALLOW FOR DIFFERENT
LOOK TO FINAL PRODUCTS

See Prime in action: View
www.PrimeEquipmentGroup.com/videos

Viewing online?
Click here



PRIME ROI:

IMPROVE SAFETY VS. OPERATOR ON HAND SAW
CONSISTENT CUTS PRODUCE HIGHER
PERCENTAGE OF A-GRADE WINGS
IMPROVE EFFICIENCY & LABOR UTILIZATION



2001 Courtright Road
Columbus, OH 43232 USA



Please call
+1 (614) 253-8590



Send us an email
Sales@PrimeEquipmentGroup.com



More info
PrimeEquipmentGroup.com



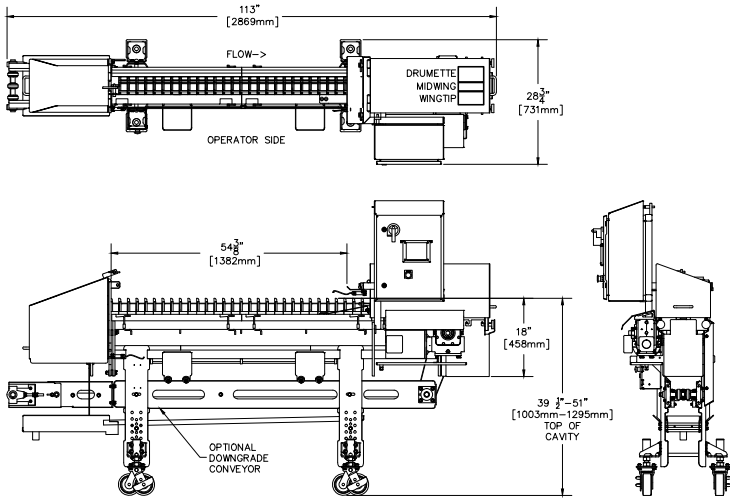
**STRONGER
TOGETHER**

**PRIME
EQUIPMENT GROUP**
Simple Solutions for Poultry Processing

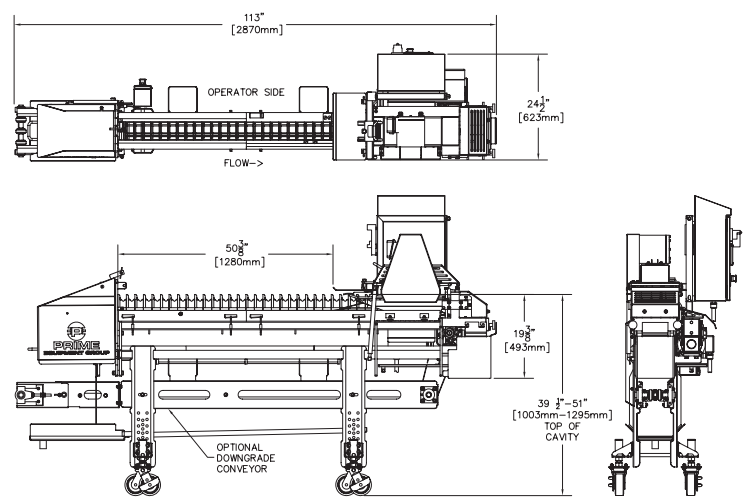
CHICKEN WING SEGMENTOR

MODELS: CWS-1, CWS-1-RB

R.H. PRIME EQUIPMENT GROUP CHICKEN WING SEGMENTOR (MODEL CWS-1)
EQUIPPED WITH OPTIONAL DOWNGRADE CONVEYOR
(2 STATION UNIT SHOWN, ADDITIONAL STATIONS = 30" LG. PER STATION)



L.H. PRIME EQUIPMENT GROUP CHICKEN WING SEGMENTOR WITH ROTARY BLADE (MODEL CWS-1-RB)
EQUIPPED WITH OPTIONAL DOWNGRADE CONVEYOR
(2 STATION UNIT SHOWN, ADDITIONAL STATIONS = 30" LG. PER STATION)



Fixed-blade



Fixed-blade cut
(CWS)



Rotary-blade head (CWS-1-RB)



Rotary-blade cut
(CWS-RB)

TECHNICAL SPECIFICATIONS

Electrical Requirements:	(1) 1 hp motor; 480V, 3 ph, 60 Hz, 10 amps CWS-RB: + 1/2 hp; 480V, 3ph, 60 Hz, 8 amps
Water Specifications:	(1) 3/8" poly connection; 1.0 GPM (3.78 LPM); 40 PSI min.
Net Weight:	2-station (shown) 600 lbs. (272 kg) Additional station (30"L): 250 lbs. (113 kg)
Production Rate:	Up to 200 whole wings per minute, dependent on machine length

NOTE: Specifications are accurate at time of publication