



**STRONGER  
TOGETHER**

**PRIME  
EQUIPMENT GROUP**  
Simple Solutions for Poultry Processing

# CHICKEN TENDER TENDON CLIPPER

Model No. CTTC-1



Prime Equipment Group's CTTC-1 is a simple and effective on-line solution, capable of operating at speeds up to 50 front halves per minute. The clipper severs the main wing tendon while still connected with the shoulder joint.

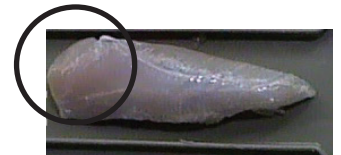
## REDUCED CLIPPING



Manual scissor clipping (100 pc)

PRIME clipped: 34g returned to yield

Scissors: unnatural straight edge



PRIME machine-cut maintains natural shape



## WORKS WITH PRIME ACCU-LOC CONE AND SHAFT

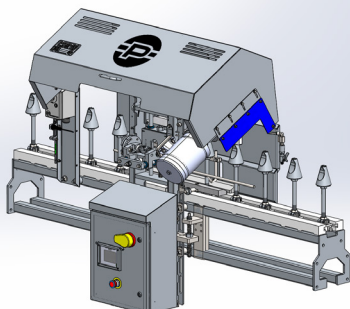
- Reliable: Shaft doesn't work loose
- Front half rotates for efficient deboning
- Secures Spine for tendon-clipping
- Maximizes efficiency with other Prime machines (Keel Harvester)



See Prime in action: View [www.PrimeEquipmentGroup.com/videos](http://www.PrimeEquipmentGroup.com/videos)

Viewing online?

ELIMINATES MANUAL LABOR  
 INCREASES TENDER YIELD  
 IMPROVES CLIP CONSISTENCY AND TENDER SHAPE  
 MOUNTS DIRECTLY TO EXISTING CONE LINES



## PRIME ROI:

AT LEAST ONE FEWER WORKER PER LINE  
 CONSISTENT CUTS CAN INCREASE TENDER YIELD OVER TYPICAL HAND METHODS  
 ALLOWS OPERATION IN EXISTING CONE LINE

2001 Courtright Road  
Columbus, OH 43232 USA

Please call  
+1 (614) 253-8590

Send us an email  
[Sales@PrimeEquipmentGroup.com](mailto:Sales@PrimeEquipmentGroup.com)

More info  
[PrimeEquipmentGroup.com](http://PrimeEquipmentGroup.com)

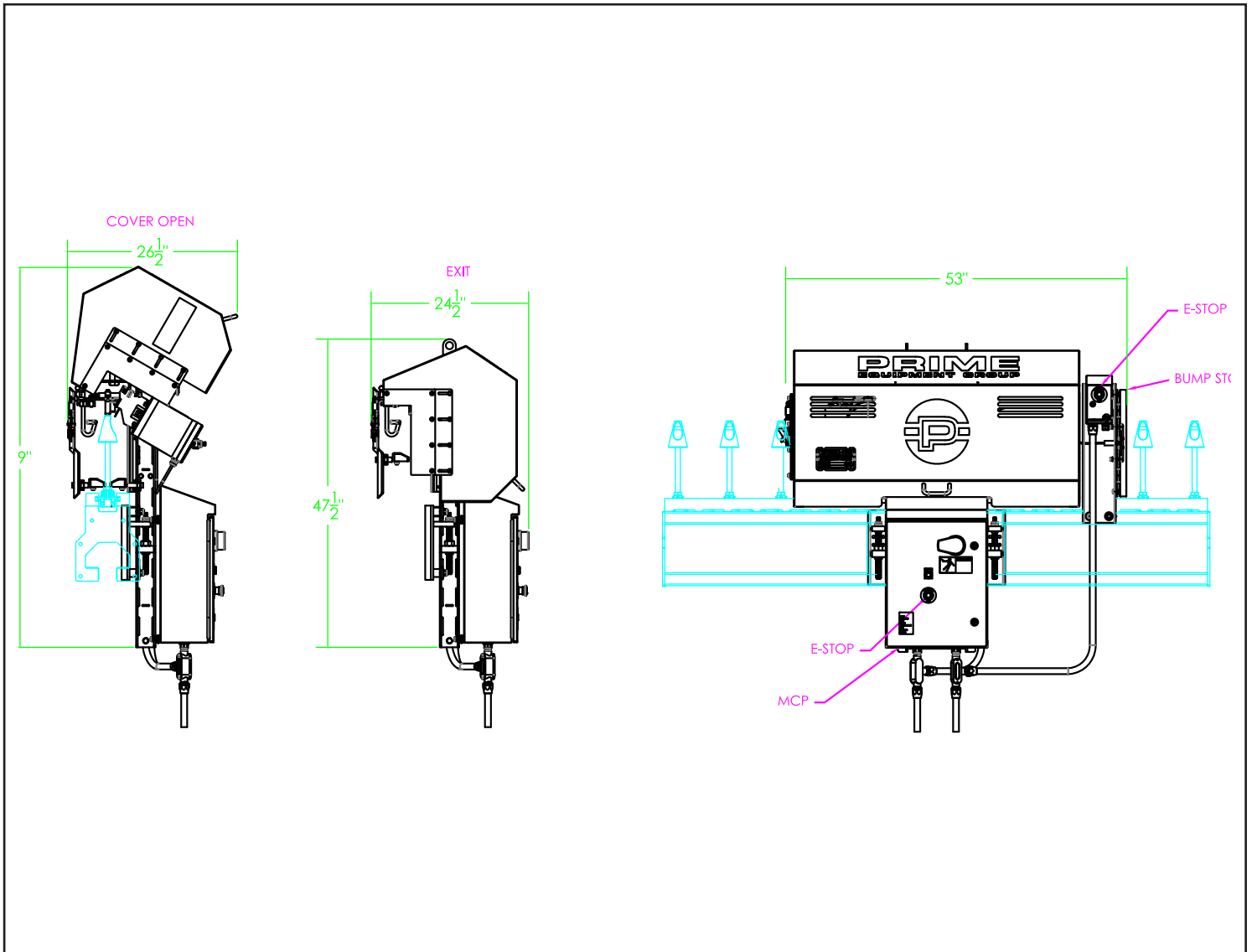


**STRONGER  
TOGETHER**

**PRIME  
EQUIPMENT GROUP**  
*Simple Solutions for Poultry Processing*

# CHICKEN TENDER TENDON CLIPPER

Model No. CTTC-1



## TECHNICAL SPECIFICATIONS

|                                                                 |                                             |
|-----------------------------------------------------------------|---------------------------------------------|
| Electrical Requirements:                                        | (1) 1/2 hp motor; 480V, 3 ph, 60Hz, 10 amps |
| Net Weight:                                                     | 600 lbs. (272 kg)                           |
| Production Rate:                                                | Variable with speed of cone line            |
| <b>NOTE: Specifications are accurate at time of publication</b> |                                             |