



**STRONGER
TOGETHER**

**PRIME
EQUIPMENT GROUP**
Simple Solutions for Poultry Processing

AUTOMATIC CHICKEN SKINNER

Model: CSK-2-AUTO

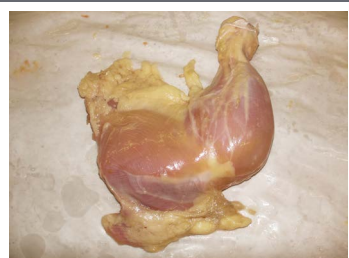


The New Prime CSK-Auto Skinner uses two of Prime's patented skinning assemblies, configured so that a loader is not needed to present the product a specific way to the skinner. Designed for bone-in legs and thighs, the CSK-Auto provides superior yield, consistent performance and excellent product quality—all while reducing labor needs.

See Prime in action: View
www.PrimeEquipmentGroup.com/videos

Viewing online?
Click here

ELIMINATES LOADING LABOR
BONE-IN LEGS, DRUMS AND THIGHS
USES PRIME'S PATENTED BLADELESS
PINCHBLOCK AND PADDLEWHEEL
IMPRESSIVE ROI AND OPERATIONAL
FLEXIBILITY



PRIME ROI:

ELIMINATES AT LEAST ONE LINE POSITION FOR BONE-IN
PRODUCT, AS A LOADER IS UNNECESSARY

CAN BE ADJUSTED TO REMOVE DIFFERENT LEVELS OF FAT TO
FINE-TUNE YIELDS

2001 Courtright Road
Columbus, OH 43232 USA

Please call
+1 (614) 253-8590

Send us an email
Sales@PrimeEquipmentGroup.com

More info
PrimeEquipmentGroup.com

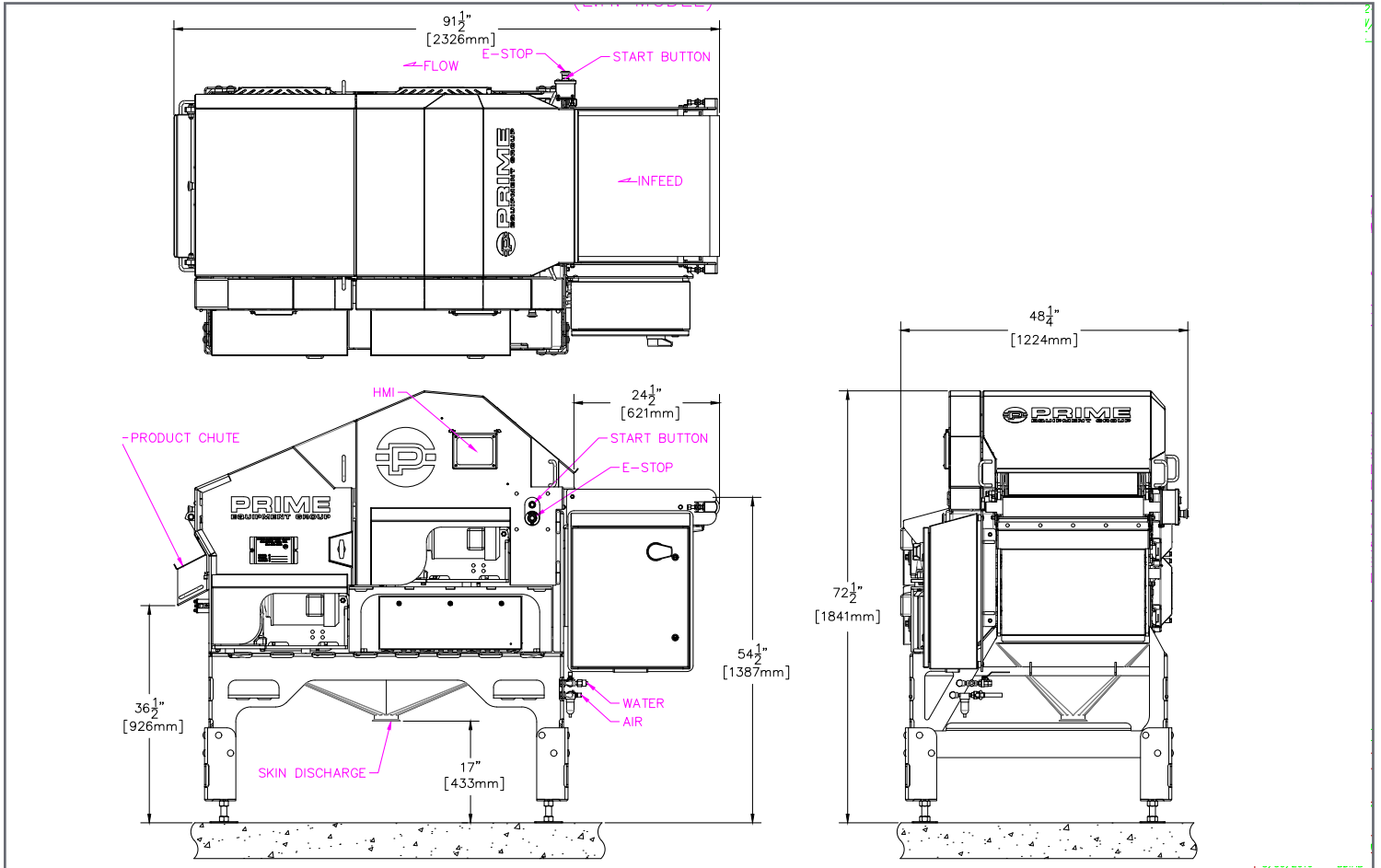


**STRONGER
TOGETHER**

**PRIME
EQUIPMENT GROUP**
Simple Solutions for Poultry Processing

AUTOMATIC CHICKEN SKINNER

Model: CSK-2-AUTO



TECHNICAL SPECIFICATIONS

Electrical Requirements:	(2) 2 hp motors; 480V, 3 ph, 60 Hz, 15 amps
Water Requirements:	(1) 1/4" NPT connection; 2 GPM, 40 psi minimum
Air Requirements:	80 PSI
Net Weight:	2,600 pounds
Production Rates, Thighs (bone in) :	Up to 220
Production Rates, Drums (bone-in):	Up to 150
Production Rates, Legs (bone-in):	Up to 90
Note: Specifications and rates are accurate at time of publication	