



Simple Solutions for Poultry Processing

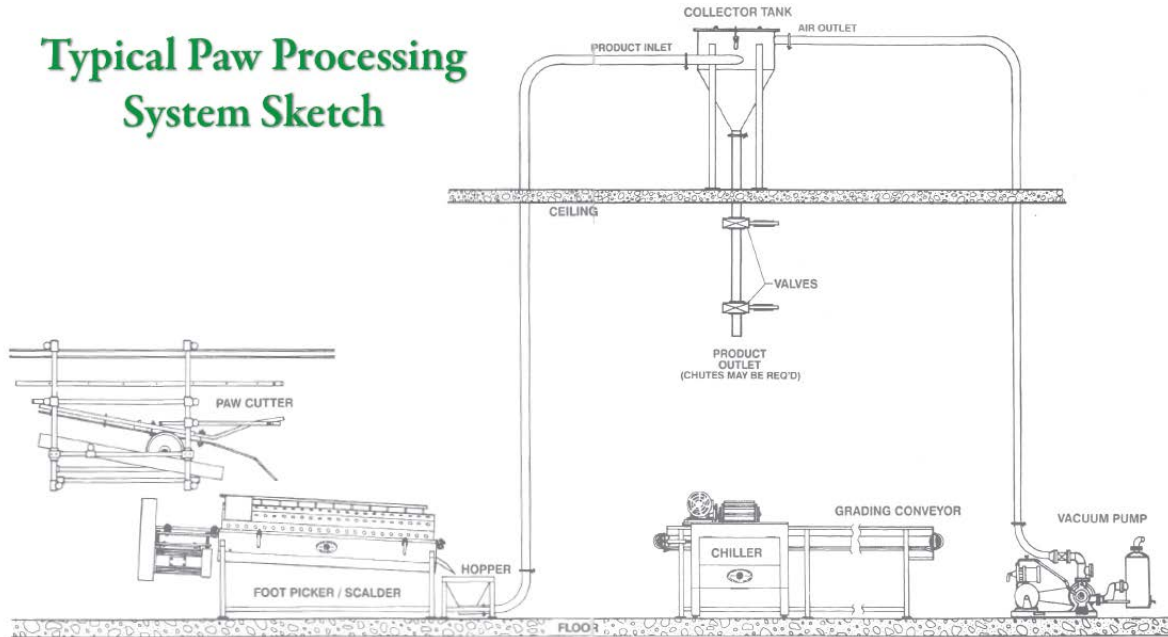
The Prime Equipment Group Paw Processing System

Maximize Paw Profits with Prime Complete Solutions



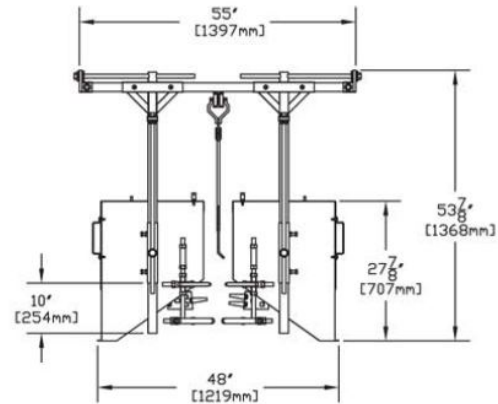
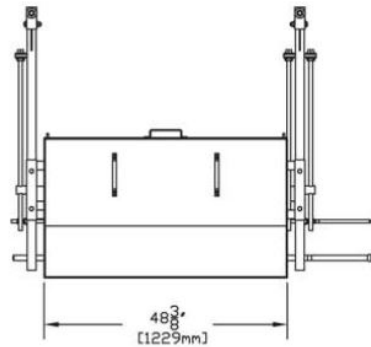
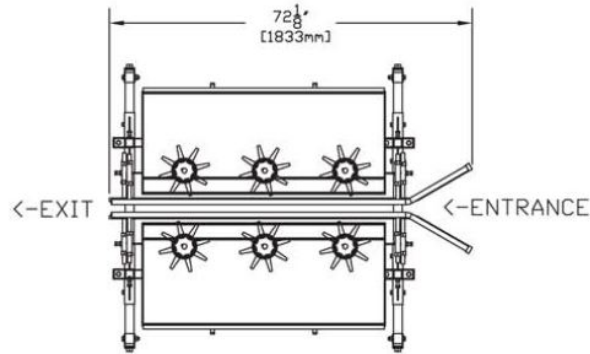
Paw system overview

Typical Paw Processing System Sketch



- Hock Picker
- Paw Pad Scrubber
- Hock Cutter
- USDA Inspection/reject system
- Paw cutter
- Paw unloader
- Warmer
- Picker / Scalding
- Paw Vacuum System or conveyor
- Paw Chiller
- Paw Grading Conveyors
- Water filtration and re-use

Hock Picker HP-3



The HP-3 removes feathers from the hock

In-Line Paw Scrubber ILPS-1

Prime Equipment Group's In-Line Paw Scrubber is a cost effective and sanitary solution to remove ammonia burns and cuticle from paws, while the paw is inline in the shackle.

Utilizes specially designed fingers to nearly completely scrub the paw in many cases, reducing hot water requirement and dwell time in the scalding-picker



In-Line Paw Scrubber ILPS-1

- Upgrades more paws to A-Grade and B-Grade
- Allows for increased revenue from paws, increasing saleable paw yield
- Increased effectiveness when the paws are submerged in the whole bird scalder
- Interchangeable scrubber segments allow for fine-tuning of picking action and ease of maintenance



Hock Cutter



The HAM-VI-B removes the hock from the bird

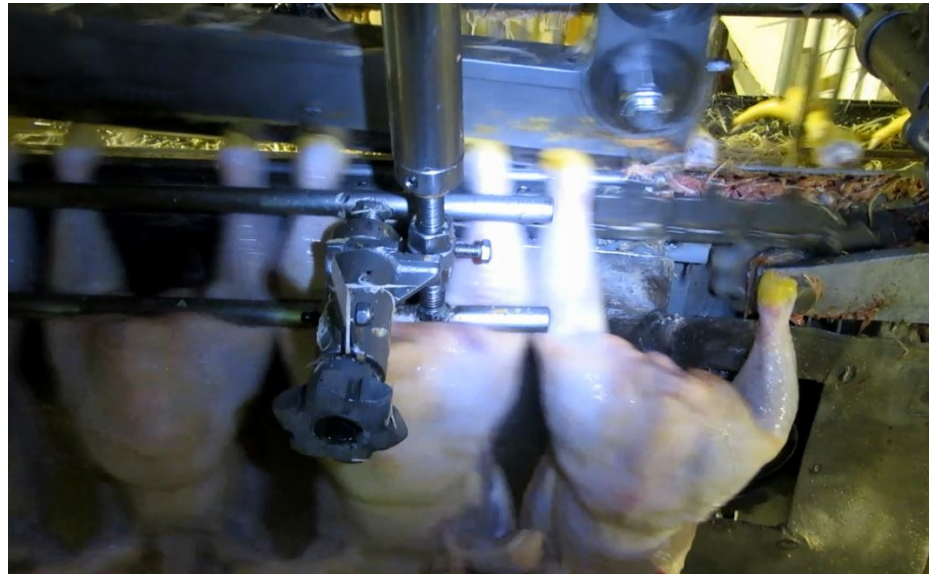
Paw Cutter, Unloader and USDA Reject System

The Paw Cutter removes the paws from the bird, while the Unloader moves paws from the shackle to a conveyor.

The paws are indexed to the bird, and remain in motion on a conveyor.

The birds are indexed to the position of their paws and travel down-line for inspection.

If a bird is rejected at the USDA grading station, the inspector hits a button and the paws from that bird are then removed from the conveyor.



Paw Warmer

The Paw warmer loosens up the follicles before the scalding, reducing hot water temperatures down-line.

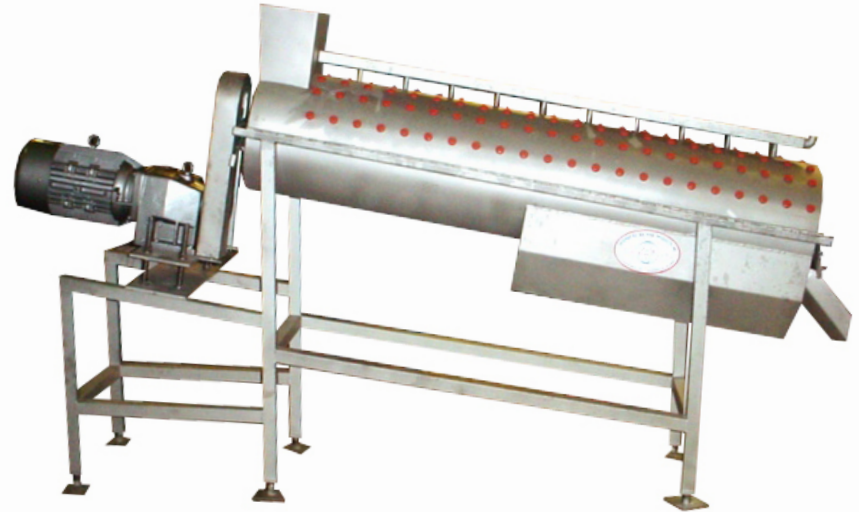


Paw Picker Scalding PPS-1

In this application, the Paw Scalding serves as a final cleaning.

Since the ILPS cleans the paws so well, water temperature in the scalding downline can be lower, preserving fat and increasing final product weight.

- Simple Design with proven industry performance.
- Heavy-Duty stainless steel construction.
- Air-assisted opener for top cover eases maintenance.



Vacuum system

Paws can be transported within the plant via conveyors or with a vacuum.



Paw Paddle Chiller

After the scalding, paws are chilled for sanitation and to preserve fat and yield.

- Features paddle-type agitation with superior dwell.
- Available with windmill or elevator unloader.
- Customize models (single/double/triple barrel)



Paw Inspection and Rework Peelers

Prime Equipment Group offers a complete range of heavy-duty, stainless-steel peeler tables for inspection needs.



Packout Transfer Conveyor

Prime Equipment Group offers both vacuum-line and conveyor solutions, customized to your needs.



Water Filtration and reuse system.

The Paw Water Filtration and Re-Use System, Model No. LPS-112 is a closed loop water system that requires only make-up water, greatly reducing water volume required for paw processing.

Customized models available with built-in tank.


Simple design with proven performance








Simple Solutions for Poultry Processing

**Contact your Prime Equipment Group
sales rep for a complete quote**

 2000 E. Fulton Street
Columbus, OH 43205 USA

 Please call
+ (614) 253-8590

 Send us an email
Sales@PrimeEquipmentGroup.com

 More info
PrimeEquipmentGroup.com