



**STRONGER  
TOGETHER**

**PRIME  
EQUIPMENT GROUP**  
Simple Solutions for Poultry Processing

## PRIME SADDLE PICKER FOR TURKEY

Model No. SP-1



The Prime SP-1 Straddle Picker for Turkey utilizes the most effective straddle defeathering method available. With extra long fingers in a dual-downstroke rotational pattern, the SP-1 reaches the difficult-to-pick straddle area of the bird for efficient, high-capacity picking. This small-footprint target-picker is particularly suited to compact picking layouts and is part of a complete picking solution from Prime Equipment Group.

MOST VERSATILE AND EFFICIENT SOLUTION  
FOR STRADDLE PICKING

LONG FINGERS REACH HARD-TO-PICK  
AREAS

MULTIPLE LENGTHS AVAILABLE

See Prime in action: View  
[www.YouTube.com/user/PrimeEquip](http://www.YouTube.com/user/PrimeEquip)

Viewing online?  
Click here

### PRIME ROI:

PROVEN DESIGN AND DURABILITY REDUCE MAINTENANCE COSTS  
KEEPS SKIN FIRMLY ATTACHED FOR HIGHER GRADE AND YIELD  
MORE EFFICIENT PICKING ALLOWS LOWER SCALD WATER  
TEMPERATURES TO LOWER HEATING COSTS



2001 Courtright Road  
Columbus, OH 43232 USA



Please call  
+1 (614) 253-8590



Send us an email  
[Sales@PrimeEquipmentGroup.com](mailto:Sales@PrimeEquipmentGroup.com)



More info  
[PrimeEquipmentGroup.com](http://PrimeEquipmentGroup.com)

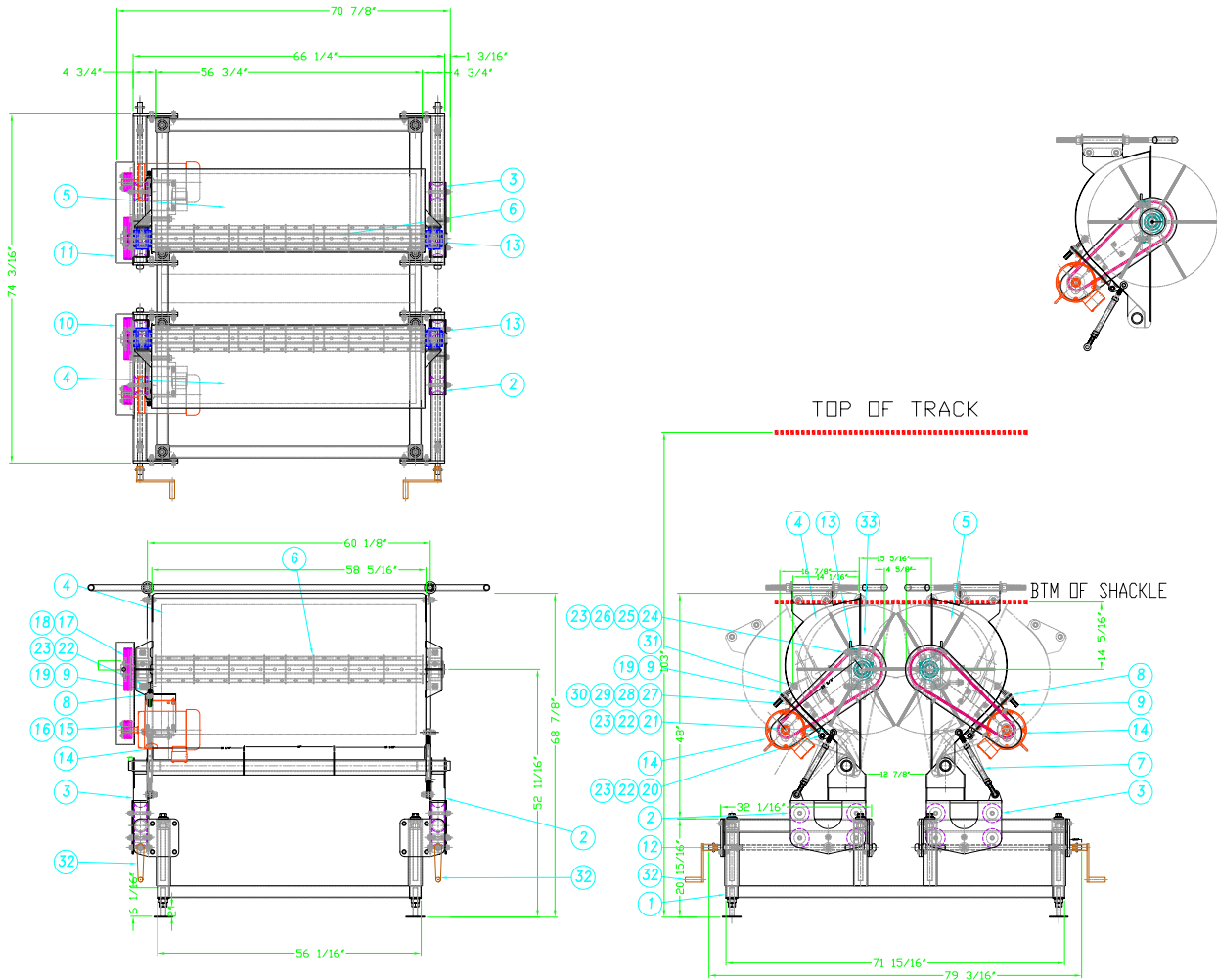


**STRONGER  
TOGETHER**

**PRIME  
EQUIPMENT GROUP**  
Simple Solutions for Poultry Processing

# PRIME SADDLE PICKER FOR TURKEY

Model No. SP-1



## TECHNICAL SPECIFICATIONS

Electrical Requirements:	230-460V, 60 Hz, 3 ph
Motor Specs:	(2) - 3 HP
Water Requirements:	(2) - 1" Pipelines
Net Weight:	2,000 lbs.
Production Rate:	Variable

NOTE: Specifications are accurate at time of publication

2001 Courtright Road  
Columbus, OH 43232 USA

Please call  
+1 (614) 253-8590

Send us an email  
Sales@PrimeEquipmentGroup.com

More info  
PrimeEquipmentGroup.com