



**STRONGER
TOGETHER**

**PRIME
EQUIPMENT GROUP**
Simple Solutions for Poultry Processing

CHICKEN LEG PROCESSOR WITH AUTOLOADER

Models: LP-1/LS-1 & LPAL-1 Autoloader



Autoloader shown
on reverse



The LP-1 Chicken Leg Processor with Autoloader can effectively produce backs, whole legs, thighs, drumsticks and leg quarters with minimal adjustment. Also, the finished pieces can easily be separated left from right into product chutes for pack-out. The Prime FoodCraft Leg Processor offers a highly flexible product cut-up system. With multiple machines, you can run at speeds up to 160 plus birds per minute.

See Prime in action: View
www.PrimeEquipmentGroup.com/videos

Viewing online?
Click here

REMOVES SADDLE FROM LINE AND
CUTS IT INTO REQUIRED PRODUCT

EASY ADJUSTMENT FOR CHANGES IN
PRODUCT REQUIREMENTS: BACKS,
WHOLE LEGS, THIGHS, DRUMSTICKS
OR QUARTERS



PRIME ROI:

98 PERCENT GRADE A CUTS MAXIMIZES YIELD AND MINIMIZES
LABOR NEEDS

PROVEN OVER TIME TO PRODUCE THE HIGHEST QUALITY CUTS
AVAILABLE ON THE MARKET



2001 Courtright Road
Columbus, OH 43232 USA



Please call
+1 (614) 253-8590



Send us an email
Sales@PrimeEquipmentGroup.com



More info
PrimeEquipmentGroup.com



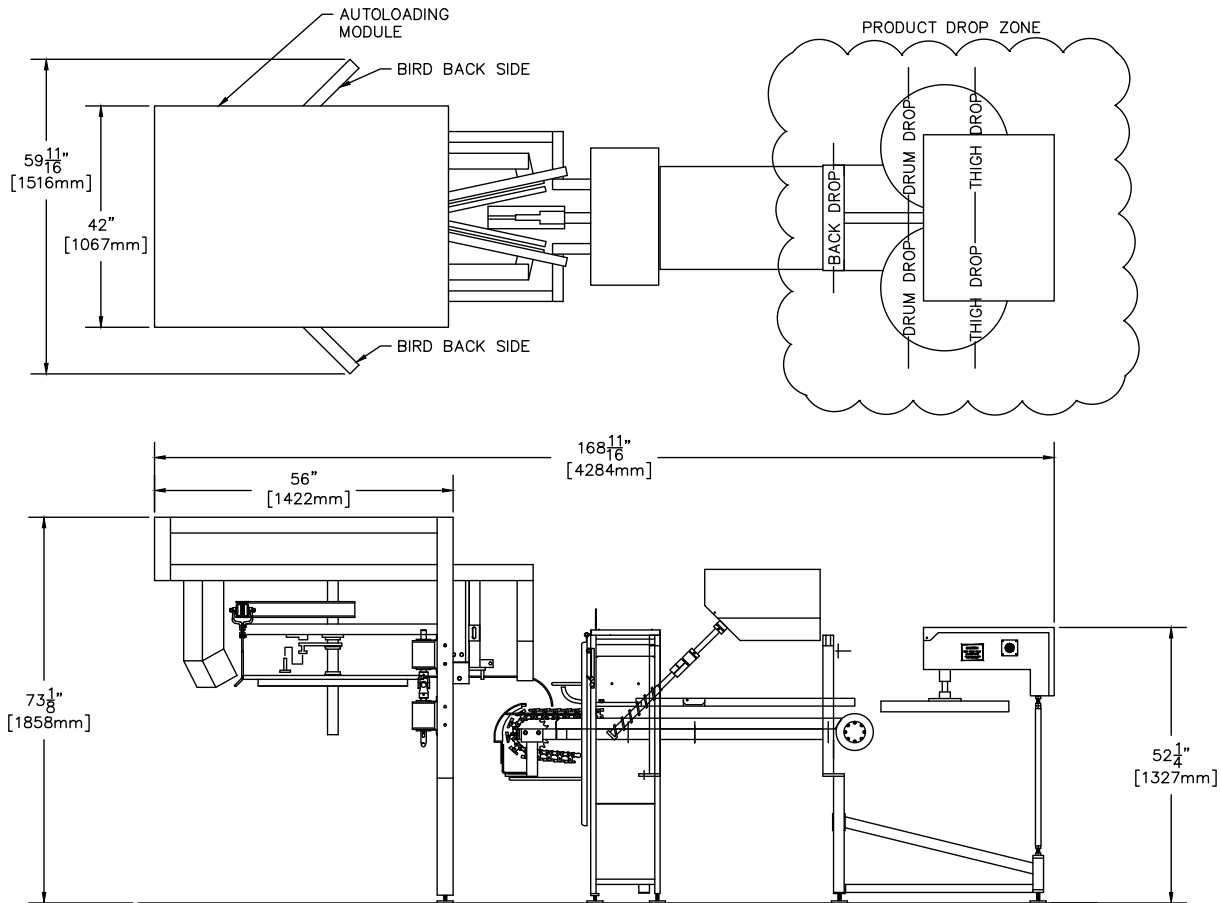
**STRONGER
TOGETHER**

**PRIME
EQUIPMENT GROUP**
Simple Solutions for Poultry Processing

CHICKEN LEG PROCESSOR WITH AUTOLOADER

Models: LP-1/LS-1 & LPAL-1 Autoloader

FOODCRAFT CHICKEN LEG PROCESSOR WITH AUTOLOADING MODULE (MODEL LPAL-1)



TECHNICAL SPECIFICATIONS

Electrical Requirements:	120V, 60Hz, Control Circuit
Hydraulic Requirements:	15 GPM @ 1,200 PSI
Electric Option:	(1) 1.5 hp motor; (2) 1hp motors; 480V, 3 ph, 60 Hz
Net Weight:	1,000 lbs. (453 kg)
Production Rates:	Up to 80 BPM per machine
NOTE: Specifications and rates shown are standard at time of publication	