

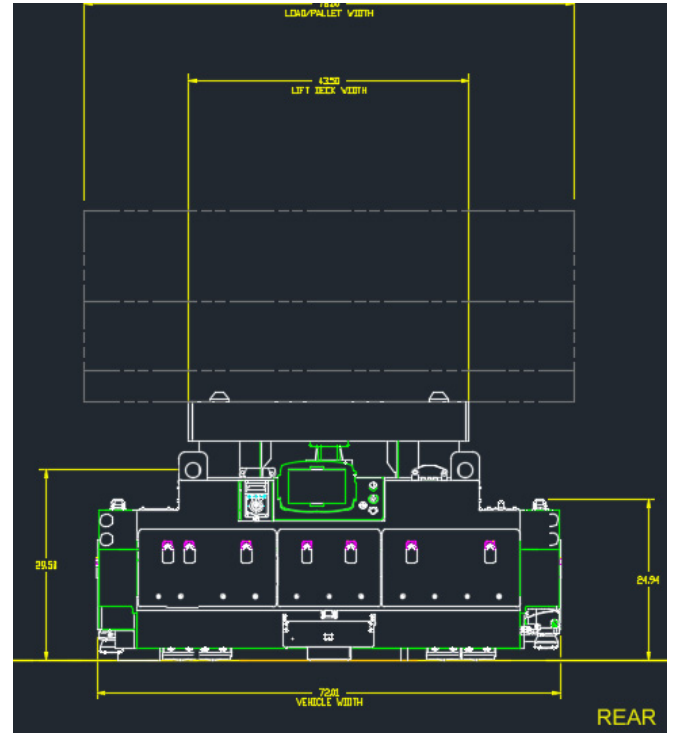
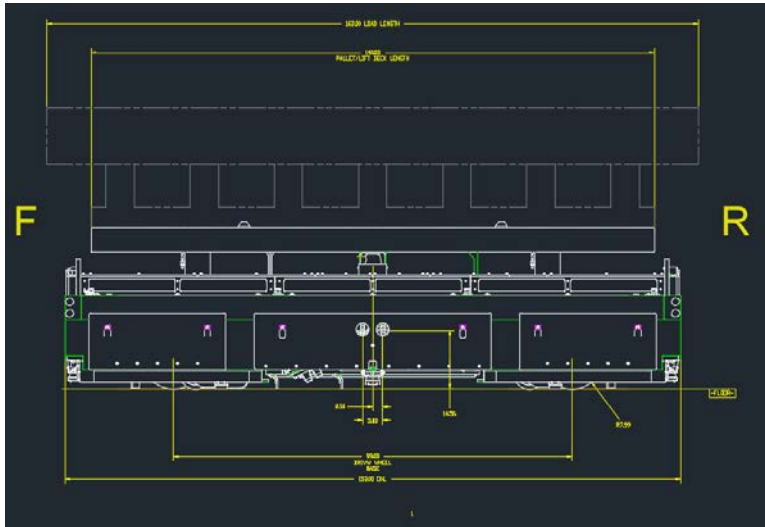


### Vehicle Features

- Allows for the movement of blanks stacked on pallets
- Interfaces with press shuttle forks, AS/RS, press tunnels, and several press lines
- Minimizes the need for manual vehicle interaction



## Vehicle Specifications\*



<b>Drive- Front</b>	Electric	<b>Brakes (3)</b>	Electromechanical	<b>Load Capacity Max.**</b>	11,000 kg
<b>Power Operating</b>	48VDC	<b>Rear Drives</b>	Electric	<b>Travel</b>	Bi-Directional
<b>Power Source</b>	Battery	<b>Weight</b>		<b>Travel Speed</b>	1.1 m/s **
<b>Battery</b>	Lithium Ion, Lead Acid	• <b>Loaded (max)</b>	15,000 kg	<b>Wheels</b>	
<b>Steering</b>	Steer / Drive	• <b>Unloaded</b>	4,000 kg	<b>Drive Wheel</b>	41 cm Diameter
<b>Controls</b>		• <b>Unloaded (no Battery)</b>	3,850 kg	<b>Two Rear Drive Wheels:</b>	56cm Diameter
<b>Automatic:</b>	Laser Guided	• <b>Battery</b>	180 kg		
<b>Manual:</b>	Pendant Controller				
<b>Safety Features (Standard)</b> Flashing Lights, Emergency Stop Buttons, Scanning Bumpers, Horn					

\* Specifications subject to change

\*\* Specifications reflect vehicle pictured above. Contact JBT Corporation for more information on other vehicle types



www.jbtc-agv.com

John Bean Technologies Corp.  
 400 Highpoint Drive  
 Chalfont, PA 18914 USA  
 Phone: 215-822-4600  
 Fax: 215-822-4553  
 sgv.sales@jbtc.com

John Bean Technologies Ltd.  
 Unit VI Winchester Avenue  
 Blaby Industrial Park  
 Blaby Leicester, UK, LE8 4GZ  
 Phone: +44 116 264 2250  
 Fax: +44 116 264 2279  
 uksgsales@jbtc.com