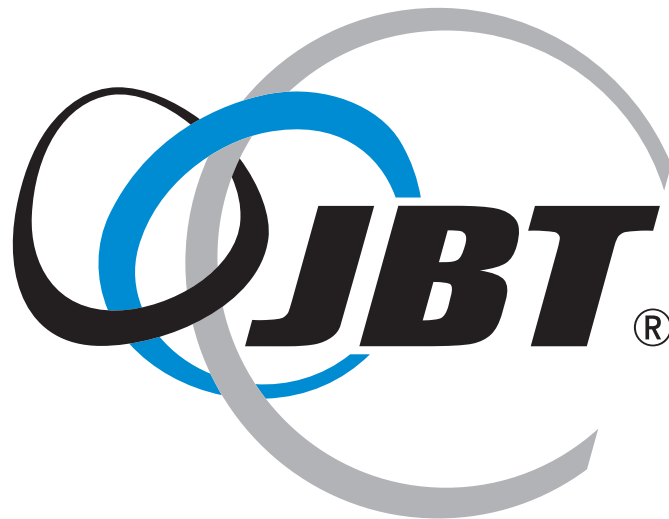


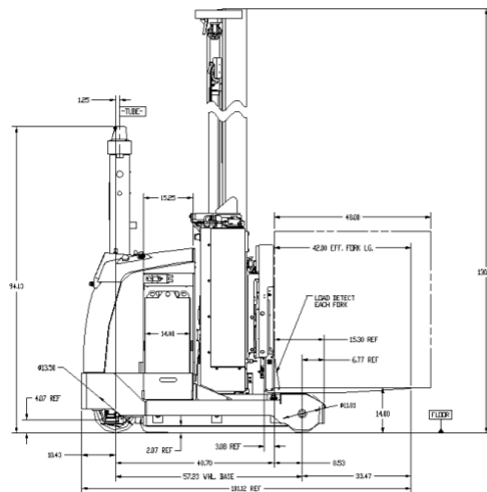
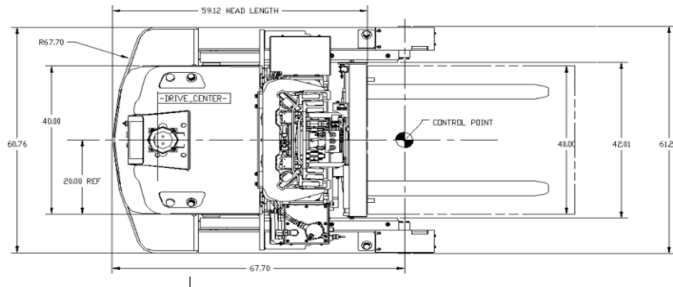
Warehouse Freezer AGV



Vehicle Features

- Operates in -10°F to +110°F (-23°C to +44°C)
- Triple stage hydraulic mast with integrated side shift an tilt
- 11.5' minimum aisle width
- Variable lift heights: ~357" (to top of forks) & 422" available

Vehicle Specifications*



Drive	Electric	Brakes	Electromagnetic	Lift Capacity	1,134 Kg <i>2,500 lbs. Max**</i>
Power Operating Power	48VDC Battery	Lift Power	Hydraulic		
Type	Li-ion	Elevated Height	9 m/ ~357" & 10.7m/ 422" available	Wheels	
Steering	Steer / Drive	Lift Speed	Raise: 11"/ Sec Lower: 10"/ Sec	Drive Wheel	34.3 cm 13.5" Diameter
Controls		Travel	Bi-Directional	Two Rear Wheels:	30cm 11.8" Diameter x 10cm 4"
Automatic:	Laser Guided	Travel Speed	1.8 m/s 350F/M**		
Manual:	Pendant Controller				
Safety Features (Standard) Flashing Lights, Emergency Stop Buttons, Obstacle Sensing Bumpers, Horn					

*Specifications subject to change

**Variable speeds available

***Load Size and Lift Height Dependent

North America

John Bean Technologies Corp.
400 Highpoint Drive
Chalfont, PA 18914
USA
Phone +1 215 822 4600
Fax +1 215 822
sgv.sales@jbtc.com

Europe

John Bean Technologies Ltd.
Unit IV Winchester Avenue
Blaby Industrial Park
Blaby Leicester, UK LE8 4GZ
Phone +44 116 264 2250
Fax +44 116 264 2279
uksgvsales@jbtc.com

Latin America

John Bean Technologies Corp.
Av. Eng. Camilo Dinucci 4605
Il Distrito Industrial - 14808-900
Araraquara, Brasil
+55 16 3301 2000
latinamerica.info@jbtc.com

